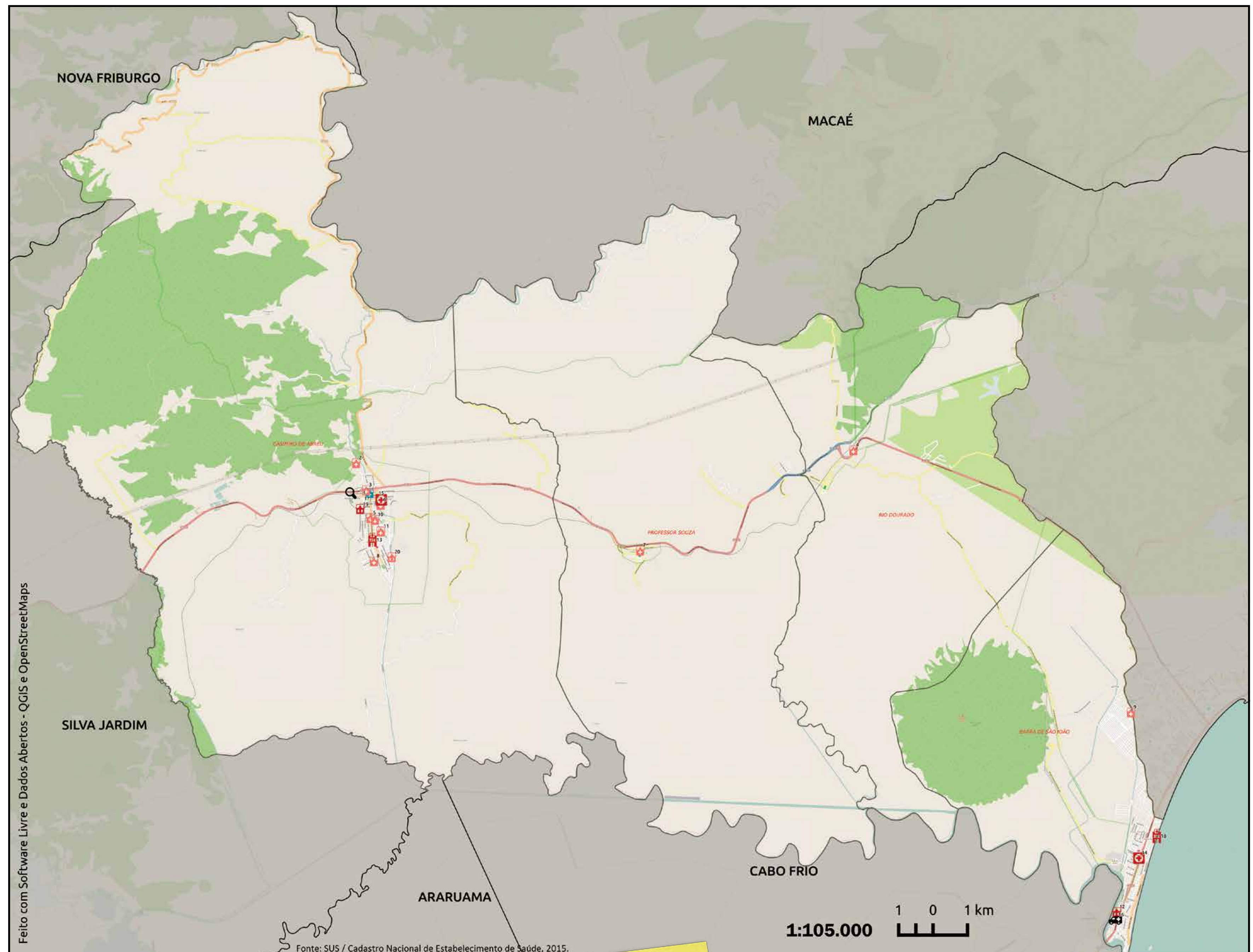


MAPA DA CIDADANIA DO DIREITO À SAÚDE









CASIMIRO DE ABREU

CENTRO



LEGENDA

ESPAÇOS DE SAÚDE

-  USF/UBS/PSF/NASF/Posto de Saúde - 10
-  Centro de Especialidades/Centros Municipais - 2
-  Secretaria Municipal de Saúde - 1
-  Hospital - 2
-  CAPS/CAPSI - 1
-  Policlínica - 2
-  Vigilância em Saúde - 1
-  SAMU/Unidade Móvel - 1

