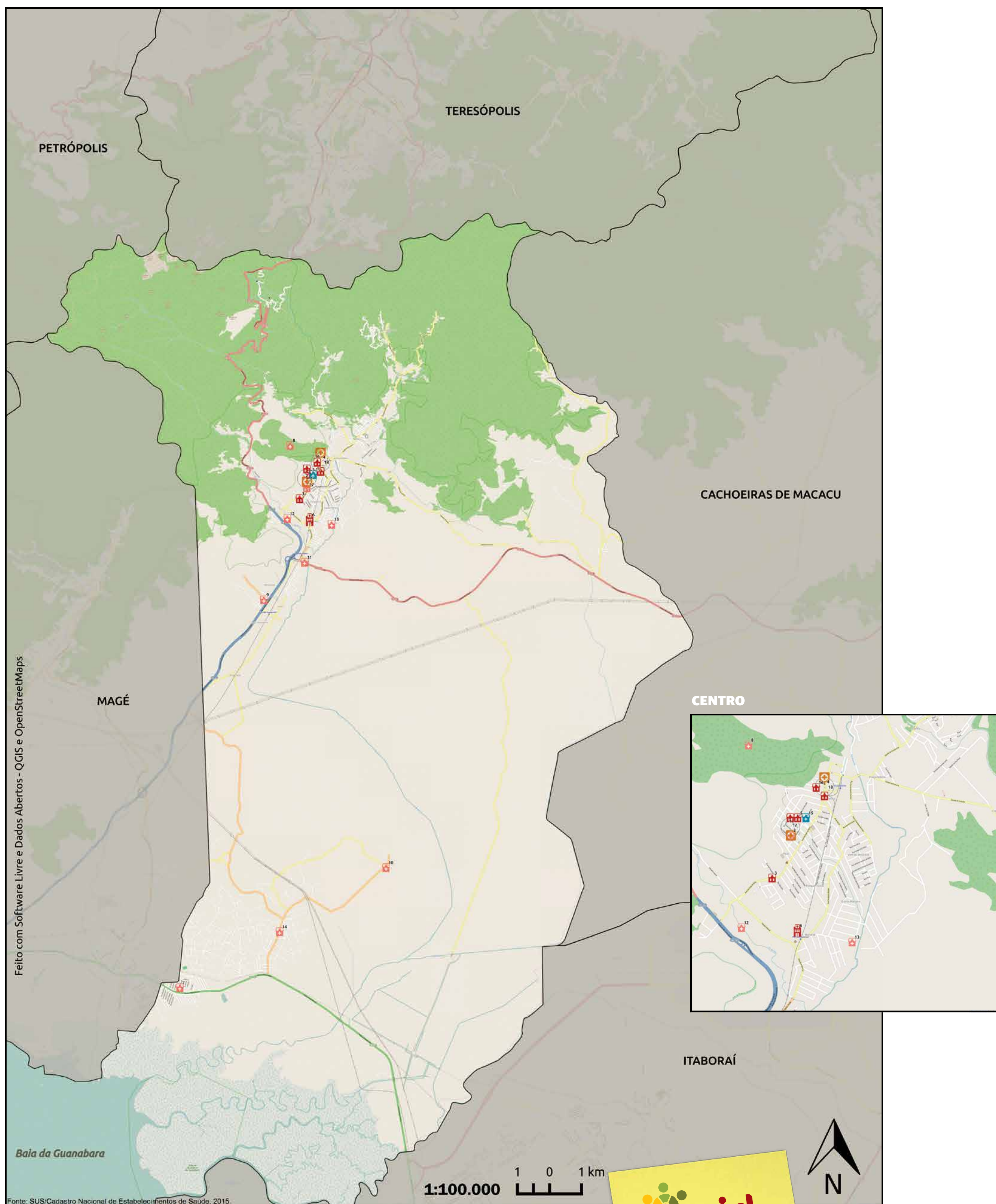








MAPA DA CIDADANIA DO DIREITO À SAÚDE

GUAPIMIRIM



LEGENDA

ESPAÇOS DE SAÚDE

-  USF/UBS/PSF/NASF/Posto de Saúde - 8
-  Centro de Especialidades/Centros Municipais - 5
-  Secretaria Municipal de Saúde - 1
-  Hospital - 1
-  CAPS/CAPSI - 1
-  Outros Equipamentos/Serviços de Saúde - 2



REALIZAÇÃO

ibase.
Instituto Brasileiro de
Análises Sociais e Econômicas

PARCERIA

BR PETROBRAS

GOVERNO FEDERAL
BRASIL
PÁTRIA EDUCADORA